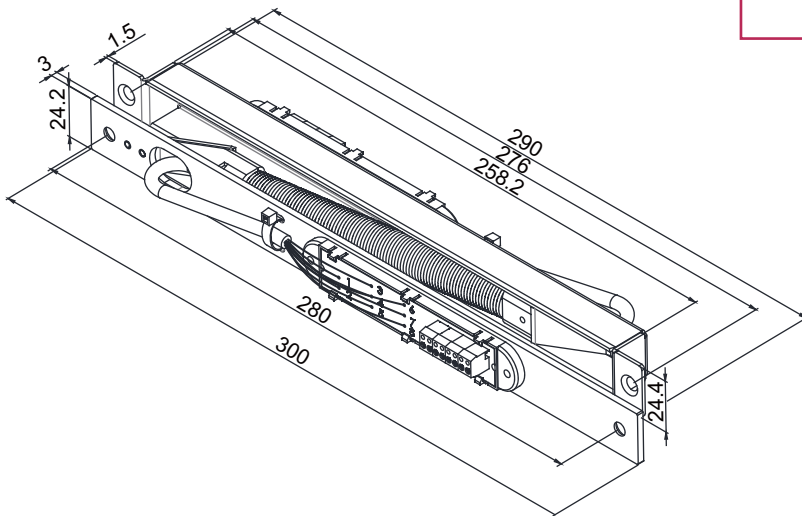


#DX417 POWER TRANSFER

DX417 provides the means of transferring electrical power & data from the frame to the door in a secure and discreet manner. The DX417 Power Transfer Mortised Mount Door Loop with terminal boards is equipped with two pluggable terminal blocks on both ends of the loop, which allows easy connection and disconnection of wires for quick installation and simple maintenance. Suitable for metal door frames with square drilling holes.

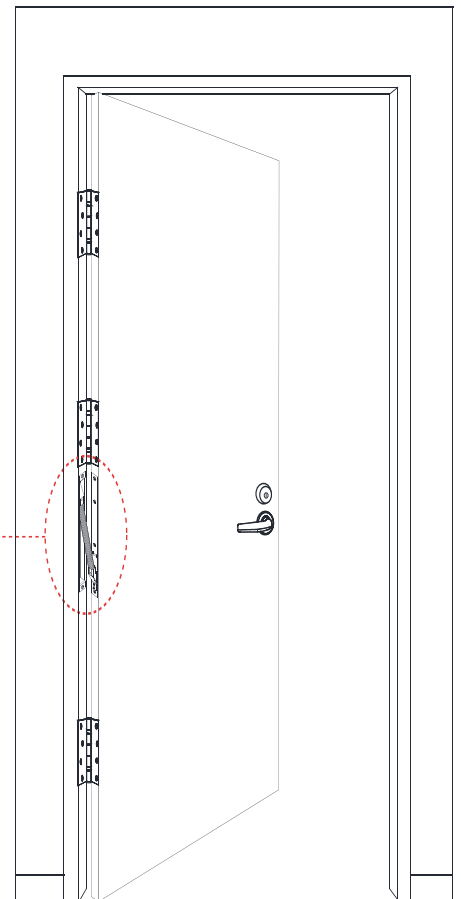
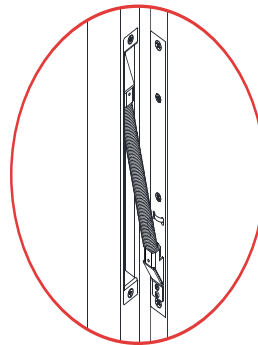
Concealed Door Loop Installation

Totally concealed when the door is closed, the DX417 Power Transfer Door Loop for mortise mounting beautifies the door frame and provides clean appearance.



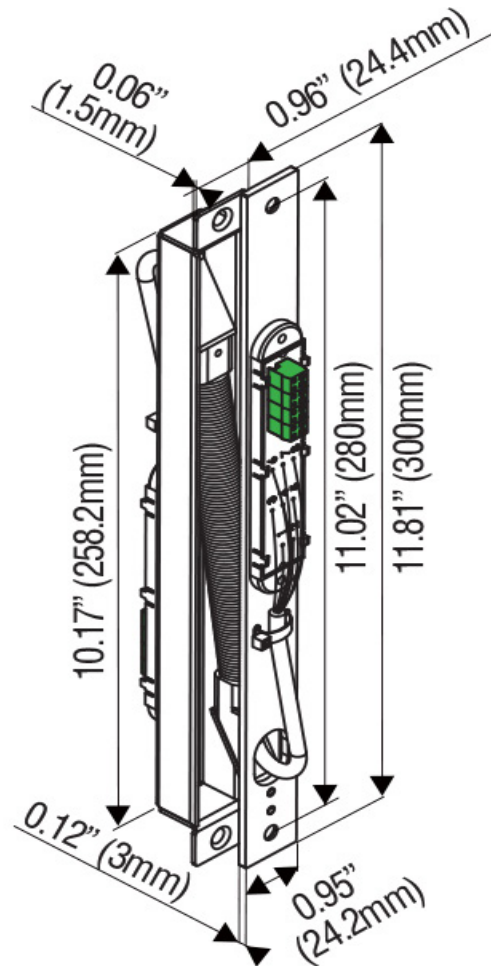
Specifications

- Stainless Steel case and Stainless Steel flex conduit
- Operating Voltage: 12 or 24 VDC
- Terminal Block Rating: 12V/2A or 24V/1A
- Gauge Size: 24 AWG
- Wires Color: Red 1, Black 2, Grey 3, White 4, Orange 5, Yellow 6, Blue 7, and Green 8
- Terminal Block Specifications and Connections:
- 2-pair Green blocks (terminal 1, 2): Power In
- 3-pair Blue blocks (terminal 3, 4, 5): SPST switch contacts
- 3-pair Green blocks (terminal 6, 7, 8): SPST switch contacts
- Note :
- Wire color numbers match terminal block numbers,
- and the terminal blocks on both sides are labeled with the same number.
- For each side, the Red wire 1 is connected to terminal 1 of the Green Block, the Black wire 2 is connected to the terminal 2 of the Green Block, and so on.



#DX417

POWER TRANSFER



Product Features

- Power Transfer Door Loop with Terminal Boards for Metal Door Mortise Mounting
- Stainless steel flex conduit
- Inside conduit diameter: 3/8" (9 mm)
- Outside conduit diameter: 9/16" (14.5 mm)
- Dimensions: 320L x 25W x 53D mm
- 8-conductor@24 gauge
- Detachable terminal blocks
- Stainless steel flex conduit & case
- Metal frame

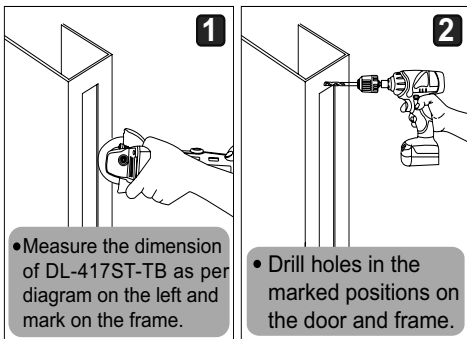
#DX417

POWER TRANSFER

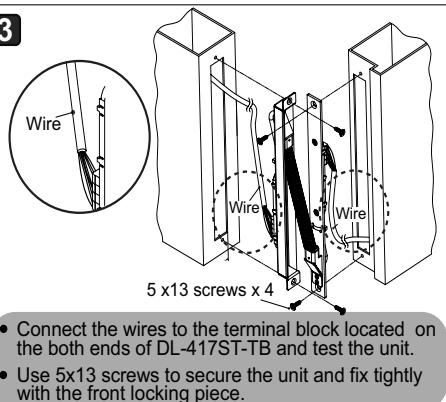
INSTALLATION INSTRUCTIONS

1

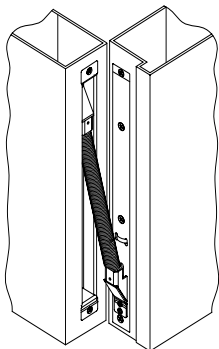
Installation Steps



3



4



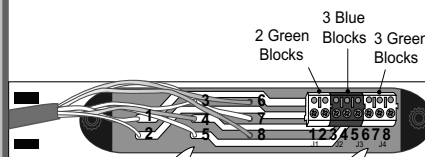
Accessories



- Make sure the DL-417ST-TB is completely embedded into the door and frame.

2

Terminal Block Wiring Diagram



Wire

1 Red	+
2 Black	-
3 Grey	NC
4 White	COM
5 Orange	NO
6 Yellow	NC
7 Green	COM
8 Purple	NO

Terminal Block

1 Red	+
2 Black	-
3 Grey	NC
4 White	COM
5 Orange	NO
6 Yellow	NC
7 Green	COM
8 Purple	NO

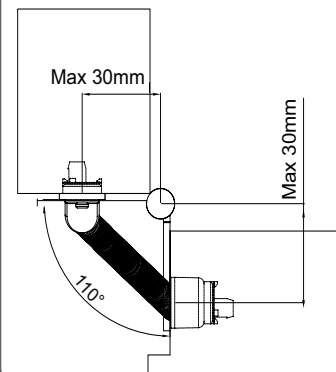
Note:

Wire color numbers match terminal block numbers, and the terminal blocks on both sides are labeled with the same number.

For each side, the Red wire 1 is connected to the terminal 1 of the Green Block, the Black wire 2 is connected to the terminal 2 of the Green Block, and so on.

3

Door Opening Angle & Installaion Distance



4

Concealed Door Loop Installation

