



PUSH
TO
EXIT

EMERGENCY
DOOR
RELEASE

PUSH
TO
UNLOCK

PUSH
TO
SOUND ALARM

PUSH
TO
UNLOCK

PUSH
TO
EXIT

PUSH
TO
LOCK

PUSH
TO
EXIT

PUSH TO
UNLOCK GATE



EMERGENCY
DOOR
RELEASE

PUSH
TO
OPEN

PUSH
TO
OPEN

PUSH
TO
LOCK

ELECTRIC DOOR CONTROL
AND
MONITORING SYSTEMS

OPERATE

PUSH
TO
EXIT

EMERGEN
DOOR
RELEAS

DeltrexUSA – offers the most complete, diversified and comprehensive line of user friendly electric door control systems, exit release, call buttons, electromagnetic locks, power supplies, monitoring device assembled hardware with complete simplified application solutions. All products are designed, developed and most are made in the USA. All **DeltrexUSA** systems are code conforming and ADA compliant as applicable. They are consistently reliable, durable and long lasting. Milling and engraving is done at our factory, and optionally, all plate types can be custom engraved with dealer's name. The original founder of Deltrex is Irving Saphirstein, recognized as the inventor of the electromagnetic lock and the founder of Locknetics in 1969. Irvin's vast experience is of benefit to **DeltrexUSA** and our community of users.

The team at **DeltrexUSA** is dedicated to the success of its dealers and users. We invest heavily in cutting edge hardware and software aimed at delivering highly innovative solutions such as our intelligent **Local Door Alarm (LDA)** and **Door Management Alarm (DMA)** (Series 8200) as well as an **Innovative Access Doors Controllers** (Series 9000).

At **DeltrexUSA** we are guided by simple core beliefs: Innovation Performance, Customer Service, Quality, Price, Networking.

DeltrexOEM – Our engineers can offer specialized services to design, develop and supply USA made control boards, switches or systems to meet any and all of your specification needs.

DeltrexAVI – Our OEM department offers Vehicle Control and Automatic Vehicle Identification (AVI) Barcode Reader. The infrared laser based reader can identify the vehicle's barcode at speeds up to 50MPH. DeltrexUSA's Barcode (Model DLX-4000) AVI is the most compact and cost effective barcode reader available.

DeltrexIES – Our engineers are available to provide CAD based, full system analysis and validation, with specialized security integration. The services are offered as custom solutions to our dealers, suppliers and customers.

For additional details on any of these OEM features contact our design services engineers at the DeltrexUSA main office.

TERMS: All claims for shortage or improper filling of order should be made within 10 days of receipt. No returns accepted without prior authorization. Returns should be made within 30 days of authorization, freight prepaid, 25% restocking and handling charge will apply. Returns made after 30 days from date of delivery will receive a credit to their account to be applied to future orders. Nonstandard and specialty fabricated items are not returnable. CANCELLATION CHARGE: 25% If order is fabricated and packed. Guarantee/Warranty: Two years against defects in material or workmanship. Defective material will be replaced, however, no back charges for damage incurred or work done thereon will be allowed. Purchase or use of this product constitutes an agreement with Seller and Manufacturer that, if this product proves to be defective or in any way unsuitable, Seller's and Manufacturer's limit of liability for all damages, including but not limited to incidental or consequential damages, and User's or Purchaser's exclusive remedy, regardless of legal theory, including theories of breach of warranty, negligence and strict liability, shall be to receive, at Seller's or Manufacturer's option, repair of the defective product, an equivalent quantity of replacement product or a refund of the purchase price.

Today the company is managed and guided by top industry leaders recognized as developers of high quality and performance product lines.

Elias Wexler, DeltrexUSA

- Past Owner of Zero International, Inc. Now an Allegion Company
- Past President of the Critical Manufacturing SCC Executive Committee
Office of Infrastructure Protection, U.S. Department of Homeland Security

Isac Tabib, DeltrexUSA

- Past Owner of Antar-Com Inc. Now a Diebold company.

▼DeltrexUSA
391 Concord Avenue, Bronx, NY 10454
P: 718 401-4006 F: 718 401-4066
E: contact@deltrexusa.com

DeltrexUSA Products

Please refer to,
deltrexusa.com for products
not shown in this catalog

PUSH PLATE AND SWITCHES

PUSH BUTTONS
ARCHITECTURAL PUSH PLATES
EXIT REQUEST AND REQUEST TO EXIT
PNEUMATIC DELAYED RESET SWITCH
TOGGLE SWITCHES

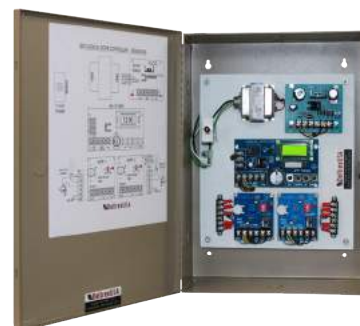
CALL BUTTON ACTUATORS
ANTI-VANDAL DURESS AND EMERGENCY CALL
DOOR STATUS SWITCHES

SPECIALTY

VISUAL STATUS MONITORING AND INDICATORS
AUDIBLE ANNUNCIATOR PANELS
PROGRAMMABLE ELECTRONIC DIGITAL KEY PADS
HIGH SECURITY MORTISE CYLINDER KEY SWITCH

POWER SUPPLIES

POWER SUPPLY
HIGH CURRENT MULTI OUTPUT POWER SUPPLY
TRANSFORMERS
BRIDGE RECTIFIERS WITH LEADS
MINI SOUNDER

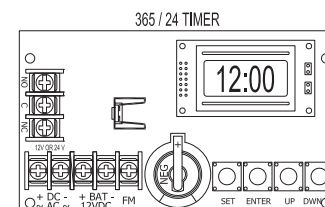


Item #903

Control System for 2 doors with
365 day clock to unlock as needed.
Contact engineering department
for specifications.

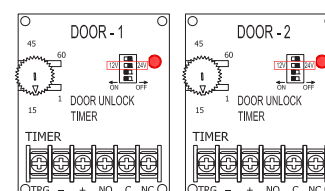
DOOR HARDWARE

ELECTROMAGNETIC (MAG LOCK) LOCKING DEVICES
EXIT SENSOR BAR
ELECTRIC STRIKES
PIR (PASSIVE INFRARED) DETECTOR
POWER TRANSFER LOOP



AUXILIARY BOARDS

TIMER BOARD
ADJUSTABLE RESET TIMER BOARD
TIME CONTROL LOCKING SYSTEM
SAFETY INTERLOCKS
DELAY EXIT
DSI BOARD



ACCESS CONTROL

ILDA - INTELLIGENT LOCAL DOOR ALARM
NU2 - UNIVERSAL CYBER SAFE MODULE FOR UP TO 16 DOORS
BAR CODE READER FOR AVI (AUTOMATIC VEHICLE IDENTIFICATION)

SYSTEMS

COMMUNICATION BATHROOMS
SHARED PATIENT OR DORMITORY ROOMS
MANTRAP
LABORATORIES, CLEAN ROOMS, X-RAY ROOMS

VHS - VERY HIGH SECURITY ROOMS
ADA SYSTEM

Push Plates

The 106 Series Push Plate Switches are an upscale actuator product, ideal for use where codes require a door control release and an aesthetically pleasing appearance. They feature a large push plate mounted on a back plate with smooth beveled edges to enhance appearance and are joined from the back with concealed screws. Narrow recessed models are specifically designed for installation in aluminum store front frames requiring minimal cut out prep.

106 Series



Plate Format

The push plates are made of 5052 marine type aluminum as standard. They are also available in stainless steel and architectural bronze. The front plate is engraved as specified in a long lasting deep format. For a complete part number, see page 11.

Better Hygiene

In response to rising hygiene standards and increasing demand for practical antimicrobial applications, the push plate switches are available in 350 type architectural bronze. This material is used in hospitals, nursing homes, doctor's office, schools and clinics. This minimizes microbial exposure while maintaining a sanitary work environment. The long lasting material withstands surface wear and maintains long lasting antimicrobial protection.

To Specify

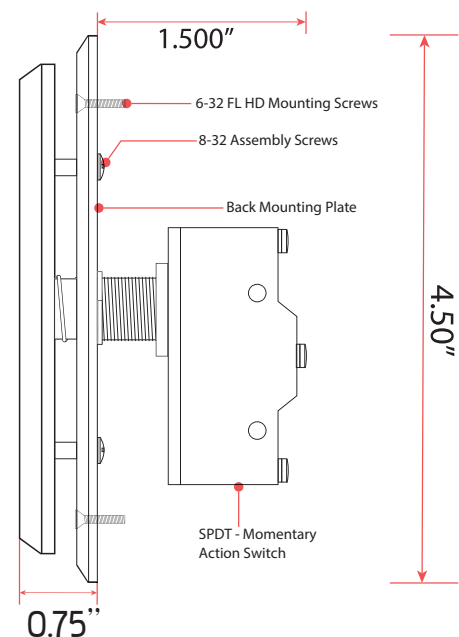
B Architectural bronze material is a mill finish form.

It is available in the following finishes:

SB sandblast (standard)

PB polished brass

OR oil rubber, dark brown; for specification, the part number will include **B-SB** or **B-PB** or **B-OR**



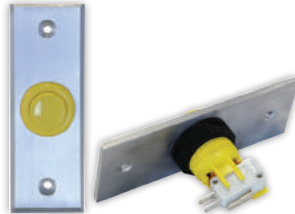
Buttons and Switches

General Purpose Buttons

Item #144



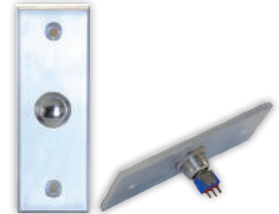
Item #147



Item #146



Item #148



Toggle Switch

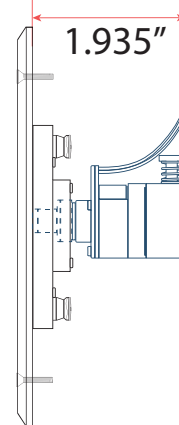
Item #101



101 Series Toggle Switches with Mustang Actuator, are rated at 6 amps @ 120VAC/28VDC and are furnished with 8" long colored coded 20 gauge stranded wire leads. The LEDs are equipped to operate at 12 or 28VDC input. Engraving is available with aluminum plates. The aluminum plate will differ slightly in dimensions when used in, aluminum or steel frames. Specify the application. For complete part number, see page 11.

Vandal Resistant Button

149 series Vandal Resistant Buttons (sometimes referred to as vandal proof switches or tamper-proof switches) are electrical switches designed to be installed in a location (or device) and application where they may be subject to vandalism or tampering, as in the case of pedestrian crossing switches, public and industrial spaces or fraudulent or unauthorized use, as in the case of vending machine switches.



Item #149



Vandal resistant switches are located on devices that are accessible to the public or which are located outside also have to be able to withstand dust, rain, snow, and frequent operation.

The surface of the actuator push plate is leveled with the base and it is easy to clean. They are made for all typical standard electrical mounting boxes as well as for special applications. Depending on the type of electrical switch, the 149 series has a mechanical life of one million cycles. For a complete part number, see page 11.

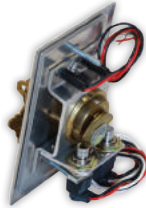
Key Switches

HS Mortise Cylinder Key Switch

Item #241



The mounting plate is beveled and made of 5052 type marine aluminum 1/4" thick, or stainless steel.



Designed for high frequency and restricted area usage, vandal resistant, [item #241](#) is operated by an 1-1/4" mortise cylinder with contacts rated up to 6 Amps @ 125VAC and 4 Amps @ 28VDC. UL recognized snap-action SPDT switch is furnished standard with 8" color coded 20-gauge stranded wire leads. Turning the key left or right momentarily activates the contact. A wide range of switch configurations including optional LED indicators can be specified. For complete part number see page 11.

Door Violation Alarm Key Switch

Item #221



Item #222



[Door Violation Alarm Key Switches](#) are installed with, loud sensors, status LEDs and a mortise cylinder keyswitch to arm, disarm and reset.

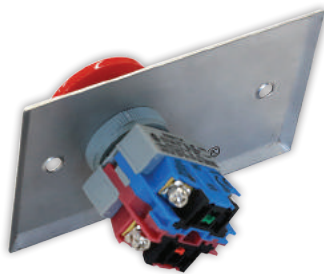
Item #3649



Installed with bell cylinder shunt switch

Non-Illuminated Door Control

Item #140



[140 series heavy duty](#), non-illuminated momentary push button on 1-gang aluminum or stainless steel. Rated at 10 Amps @ 125VAC/24VDC. Options include button engravings and 28 volt LEDs.

Emergency Door Release

Item #C3800



The [3800 series](#) fail-safe Emergency Door Release and alarm station includes a manually continuous duty alarm sounder on a 2-gang switch plate for wall mounting adjacent to the electrically locked door.

Door Controls

Door Positioning Switch

Item #188-15BK (Shown)



The unique housing design features a rugged unibody construction with flexible ribbed sides for quick, secure installation without gluing. The magnet housing isolates the magnet from the surrounding steel for maximum gap distances.



Available in White (WH) or Black (BK)

Snap Mount for HM doors and frames

182-15WH 3/8" SPDT

188-15WH 3/4" SPDT

188-15BK 3/4" SPDT

Item #184



The 184 Series comes with a recessed mount made specifically for wooden frames.

Electric Strikes

Item #600



600 Series Electric Strikes are universally adaptable to suit all door and frame types and accommodate most locking devices with up to a 3/4" latch protection. To simplify ordering and speed installation, all 600 series models feature 12/24V AC/DC field-selectable operation, dail-selectable fail-safe or fail-secure operating mode, 1/4" horizontal adjustment and modular plug-in wire connections.

Digital Key pads

210 Series Heavy Duty Digital Key pads

provide a practical and reliable means of access for authorized personnel into restricted or classified areas or after business hours. Convenient front panel programming.

Item #210-10



Allows up to 49+50 PIN.

Door read switch for anti-tailgating. Fully programmable via keypad and master code.

Durable stainless steel housing with vandal resistant screws.

Can open 2 doors with different combinations.

Specifications

Input: Request-to-exit, door reed switch

Output: Dual relays, N.O./N.C./Com. Output

Memory Volume: Relay 1 is controlled by user 001~049

PIN Codes: 5 digit codes only

Item #210-20



Aluminum alloy casing, designed with vandal resistant screws for enhanced safety and durability.

Allows up to 200+ users.

29-digit code password protected.

3 LED indicators & buzzer for status indication.

Invalid PIN lockout.

Non-Volatile Memory.

Can open 2 doors with different combinations.

Specifications

Input: 1 contact for request-to-exit button

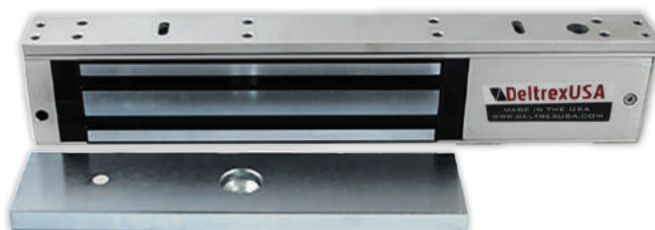
1 contact for door reed switch

Output: 2 relays (dry contacts: N.O./N.C./COM)

Memory Volume: 200+10 PINs

Electromagnetic Locks

Compact, efficient, architecturally-oriented **electromagnetic locking devices** provide safe positive instantaneous door control. These locks are designed to withstand excessive abuse and high frequency usage without fear of electrical breakdown; advanced engineered features assure longer, more durable installations without door distortion or strain.



For **Emergency**, a mag lock requires the use of a time delay switch to break the power locally at the door. This is accomplished by the use of a self contained pneumatic switch, our item number "F106-L0-SB-E02-PNUM".

For installations without an access control system, specify a powersupply (550 series) and a pneumatic switch out item, "F106-L0-SB-E02-PNUM".

When installing a power supply by others, a fire contact must be made available to break power to the maglock during fire emergencies.

For installations with our access control (5200 series) specify a request to exit motion detector, mounted on the secure side above the door (item #424), and a pneumatic switch (item F106-L0-SB-E02-PNUM). For the non-secure side, specify a proximity reader device (item #5395).



Mounting brackets are available as needed. Specify filler plates, Z bracket, spacer plates or angle brackets. For custom designed brackets submit drawings.

806 Series 650 lbs

Overall Dimensions
1-1/4"D x 1-3/4"H x 10-1/2"L
Current Draw
500mA @ 12v
250mA @ 12v

810 Series 1200 lbs

Overall Dimensions
1-1/16"D x 2-1/8"H x 12-1/2"L
Current Draw
680mA @ 12VDC
350mA @ 12VDC

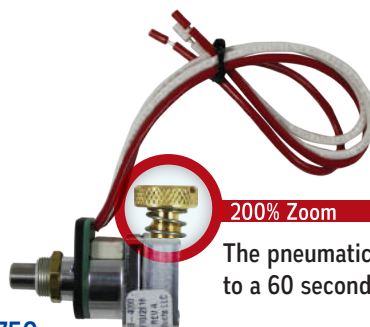
825 Series 1500 lbs

Overall Dimensions
1-1/2"D x 2-3/4"H x 11"L
Current Draw
420mA @ 12VDC
210mA @ 12VDC

Pneumatic Switch

Item #751

Miniature Pneumatic Switch



200% Zoom

The pneumatic switch can be adjusted for up to a 60 second reset delay.

Item #750

Pneumatic Switch with Time Delay

Door Readers

Proximity Card Reader

Item #5395



Specifications

18" (45cm) wire pigtail standard.
9' (2.7m) wire pigtail available by special order.
Low power consumption.
Includes multilingual installation manual.

Providing performance and reliability, PCR's attractive, unobtrusive Proximity Card Reader is housed in a two-piece, weatherproof secure potted enclosure.

Item #3300



Specifications

13.56 MHz/ 125 KHz
4001 Compatible Card
1.05mm
ABA 8H / 10D

Bridge Rectifier and Transformers

Item #C590



Specifications

C590-BR2 2 amp Rated 400PRV
C590-BR4 4 amp Rated 600PRV
C590-BR6 6 amp Rated 600PRV

A primary application of **Bridge Rectifier** is to transform an alternating current (AC) input into a direct current (DC) output. All electronic devices require direct current, so Bridge Rectifiers are used inside the power supplies of almost all door access control equipment. The C590 is furnished with 8" color coded, 20 gauge stranded wire leads for easy hook-up.

Item #BC592



Item #BC323M-15



Hardwired transformers feature solid construction with heavy duty lead and ground wires. Transformers contain fused primaries.
UL and CSA approvals.

Passive Rex Sensor

Item #424



The relay is triggered when an object enters the detection field, switching from N.C. to N.O. contact to open the door. The Rex Sensor switch can be connected to other devices such as proximity and PIN readers, and electromagnetic locks, etc.

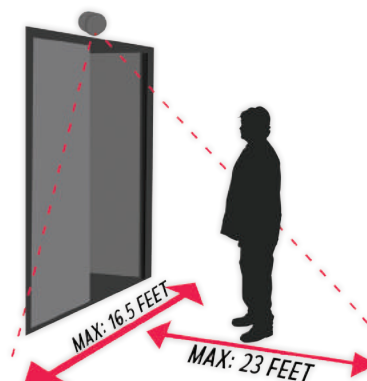
Item #425



The **DREX** is a sophisticated and cost-effective request to exit device for all access control applications and an alternative to installing an exit button. Outstanding innovations such as X-Y targeting and Digital Signal Processing (DSP) implementation make the DREX the fastest and most reliable exit detector available.

Specifications

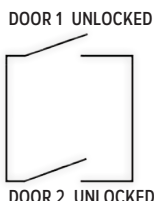
Operating Voltage: 12-24VAC/DC
Relay Ranking: 3A/125VAC/30VDC
Relay Strike Time: 0.5~4seconds
Proximity Range: 7M(23 feet)
Frequency: 10.525 GHz



Door Systems

Control Application Systems

Item #9100 2 Doors in Parallel



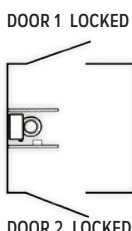
9100 Series Breakdown

Push door 1 with 106 series push plate, door 1 and door 2 opens at the same moment. There is an adjustable dual timer, so once both doors are open they can be adjusted to close at different times. When you push to open door 1, both doors will open. However, door 2 will close later to allow for traffic. Same principal starting with door 2.

9100 series for 2 doors in parallel

- 2 Item #810 MAGLOCK or item #600 Electric lock
- 2 Item #F106-E02 push plate
- 1 Item #BC323M-15 power supply
- 2 Item #188-15BK door switch monitor
- 1 Item #9101 access control with dual timer

Item #9200 Mantrap System



9200 Series Breakdown

Door 1 and door 2 are open, empty room. Push 106 series push plate from inside the room to lock both doors. Outside red lights indicated that the room is occupied. Push one of the two 106 series push plates from inside to unlock both doors. System automatically resets, emergency release on both doors from outside.

9200 series for 2 doors to one room, bathroom system

- 2 Item #810 MAGLOCK or item # 600 Electric lock
- 2 Item #F106-E02 push plate
- 1 Item #BC323M-15 power supply
- 2 Item #188-15BK door switch monitor
- 4 Item #326 indicator lamps
- 2 Item #C3800 Emergency door release
- 1 Item #9102 access control with dual timer

Power Supplies



Low Voltage Power Supplies **550 series** low voltage rechargeable power supplies with field selectable 12VDC and 24VDC outputs are fully modular. All units include a UL recognized filtered and regulated power supply/battery charger, and can include one to twelve selected control service modules. For product options please visit: www.deltrexusa.com/power-supplies

Intelligent Local Door Alarm



ILDA is programmable via Bluetooth communication to an app on an IOS enabled device. See instruction manual link.

This **Intelligent Local Door Alarms (#9900)** allow's system integrators to utilize a single type of door alarm to handle a large variety of alarm applications, including Local Warning Alarms, Door Held Alarms, and Forced Door Alarms. For more information go to page 14 or visit: www.deltrexusa.com/intelligent-local-door-alarm

Example of Proper Order Formation

D - 106 - SB - L0 - E32 - SPDT

part #

HCP Logo

Material: Marine 5052 type aluminum is standard. Stainless steel and architectural bronze plate also available.

For BRAILLE lettering specify at the end of item number.

Switch Type	
SPDT	Momentary
DPDT	Momentary
PNUM	(2-60 seconds)
TIMR	Dual Timer
WILS	Wireless
CUST	Custom

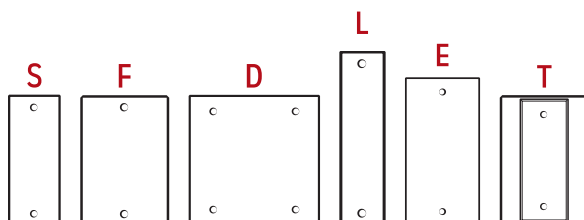
Engraving Option	
E00	No Engraving
E01	Exit
E02	Push to Exit
E03	Push to Open
E04	Emergency
E07	Push for Help
E08	Push to Lock
E09	Push To Unlock Gate
E11	Push to Sound Alarm
E15	Emergency Door Release
E22	HCP logo & Push to Exit
E24	HCP logo & Push to Open Door
E32	HCP logo & Press to Operate Door
E41	Request to Exit
EH2	HCP logo
ECE	Custom (specify)

LED Lights	
L0	No LED
L1	One green
L2	One green and red

Plate Finish		
SB	Sand Blast (Standard)	
CA	Clear Anodized	
DB	Dark Brown	
RD	Red	
BL	Blue	
WH	Off White	
CU	Custom	
NN	No Color	

Plate Size	Back Plate	Front Plate
S Narrow size	1-3/4"x4-1/2"	1-1/2"x4"
F Full Width/Single Gang	3"x4-1/2"	2-1/2"x4"
D Double size	4-1/2"x4-1/2"	4"x4"
L Narrow Long Plate	1-3/4"x6"	1-1/2"x4"
E Extra	ADVISE	ADVISE
T Full/Push Plate	3"x4-1/2"	1-1/2"x4"

Back Plates On Display



Magnetic Door Holders

#851 Surface Mount



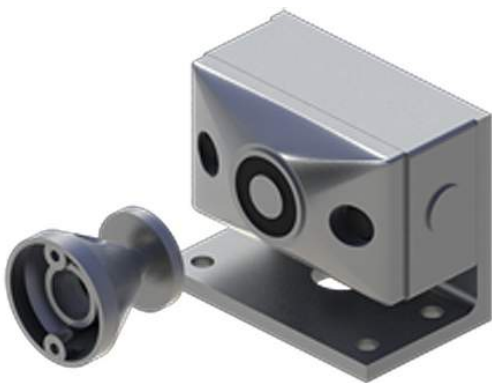
The **851 Surface Mount** magnetic door holders are expertly designed so all you need to do is open the door and a strong magnet will keep it open until you close it. The built-in bumper will help absorb the shock of the door.

#871 Flush Mount



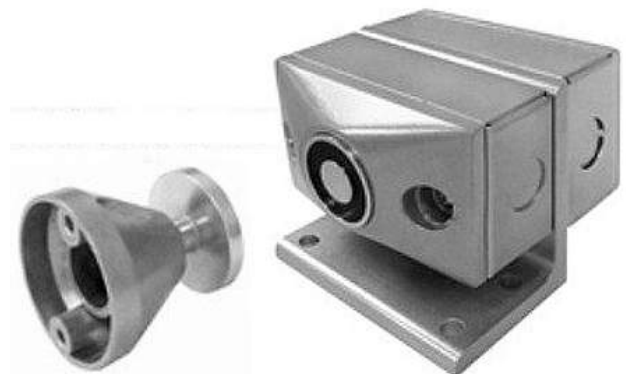
The **871 Flush Mount** magnetic door holders are mounted within the wall facing the back of the door. The bumper will absorb the shock of the door swinging open and will keep it open until you close it.

#852 Floor Single Mount



The **852 Floor Single Mount** magnetic door holders are mounted on the ground. The bumper will absorb the shock of the door swinging open and will keep it open until you close it.

#853 Floor Double Mount



The **853 Floor Double Mount** magnetic door holders are mounted with 2 door holders facing against each other on the ground. The bumpers will absorb the shock of the door swinging open and will keep it open until you close it.

Hand/Foot Push Plate

The only push plate you will ever need is the Hand/Foot Push Plate Switch. All our plates are manufactured with rust resistant 1/4" inch aluminum and non-binding internal stainless steel screws. The ideal exit device for any case of building ingress and egress.

Features

Handicap Accessible

The tall plate design invites hands-free ingress/egress

All manufactured with rust resistant 1/4" inch aluminum

Non-binding internal stainless steel screws

Tested for 1,000,000,000 pushes

Made in the U.S.A.

Specifications

Contact Rating: 6 Amps @ 125VAC/28VDC

Switch Type: SPDT - Momentary switch (Standard)

Material: 5052 Marine-type aluminum

Finish: Clear satin anodized aluminum (Standard)

Dimensions:

Back Plate: 30" x 3.00" (Multiple size options)

Push Plate: 29.5" x 2.5" (Multiple size options)

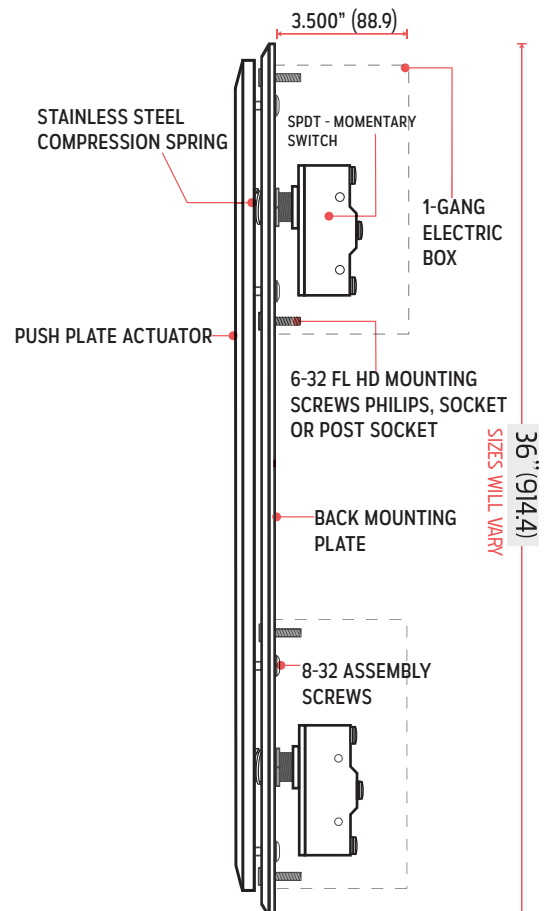
Size Options

Length x Width

30" x 3.00" 48" x 3.00"

36" x 3.00" 60" x 3.00"

42" x 3.00"



Intelligent Local Door Alarm



The Intelligent Local Door Alarm (ILDA) allows system integrators to utilize a single type of door alarm to handle a large variety of alarm applications, including Local Warning Alarms, Door Held Alarms, and Forced Door Alarms.

Features

Innovative Bluetooth® enabled door alarm

Mounts into a standard two gang electrical box

Powered from 10vdc-32vdc

Built in 2.6" LCD showing various door conditions such as: Secured, Alarm, Held Open and others

Utilizes the iButton digital key in lieu of traditional mechanical arm/disarm keys

Provides four dry relays programmed via onboard jumper to allow for supervision of: NC, 1K, 1K/2K

Available with or without LCD display

LCD allows integrators to enter 5 lines of text and/or their end user's Logo

The iLDA can be custom programmed as per customer's requirements



What is it?

Our Intelligent Local Door Alarm or iLDA for short, is an innovative Bluetooth® enabled door alarm. The iLDA mounts into a standard two gang electrical box, powered from 10vdc-32vdc, has a built in 2.6" LCD showing various door conditions such as: Secured, Alarm, Held Open and others and uses the iButton digital key in lieu of traditional mechanical arm/disarm keys.

Bluetooth® Functionality

Shunt/Bypass/Silence and other features can be performed locally using the iButton, iPhone or remotely from any Access Control System (ACS). iLDA provides four dry relays programmed via onboard jumper to allow for supervision: NC, 1K, 1K/2K. There is no need for external EOL supervision resistors.



iOS Bluetooth users are divided into two groups: Managers and Security officers, each with unique rights.

Flexible Inputs

Flexible inputs allow for remote shunt, remote bypass, remote reset as well as "Lock Voltage Sense" for both Fail Safe and Fail Secure 12VDC/24VDC locks. Local built in Database allows for validating/invalidating over 50 "digital key" users.

Item #9900



Flexible Outputs

Outputs are Bluetooth® programmed to provide conditions such as: Alarm, Shunt, Held Open and "Door Mimic" for which there is no need to drill the door's frame for multiple Door Contacts (DC/DSM).

Custom Features

The iLDA is available with or without LCD display. LCD allows integrators to enter 5 lines of text and/or their end user's Logo. In addition to many other built in features, the iLDA can be custom programmed as per customer's requirements.

Item #9700



The 9700 features a economical build. The display is removed and replaced with an aesthetically pleasing design.

Specifications

Input voltage: Range of 9-32VAC/VDC

Mounting: 2-Gang 1/2" deep electrical box

Voltage rating: @95 dB or 105dB

Pulsing tones indicate warning alarm

Decibel(dB) level is programmable

EMERGENCY
DOOR



PRESS TO
OPERATE

PUSH
TO
UNLOCK

PUSH
TO
UNLOCK

PRESS TO
OPERATE

EMERGENCY
DOOR
RELEASE

PUSH
TO
LOCK

EMERGENCY
DOOR
RELEASE

PUSH
TO
LOCK

391 Concord Avenue
Bronx, NY 10454

P: 718 401-4006

F: 718 401-4066

contact@deltrexusa.com

www.deltrexusa.com

PUSH
TO
EXIT

EMERGENCY
DOOR
RELEASE

PUSH
TO
EXIT

EMERGENCY
DOOR
RELEASE



PRESS TO
OPERATE

PUSH
TO
EXIT



PRESS TO
OPERATE

PUSH
TO
EXIT